

## Biological Control of Whiteflies

The primary whitefly species in greenhouses include the greenhouse whitefly (*Trialeurodes vaporariorum*) and sweetpotato whitefly (*Bemisia tabaci*).

### Biological Controls

Biological controls are more likely to be successful if combined with proper cultural controls and regular scouting. Avoid over fertilizing crops, especially with nitrogen, as this increase their attractiveness to adult whiteflies. Remove “pet plants” and weeds that may be a source of whiteflies.

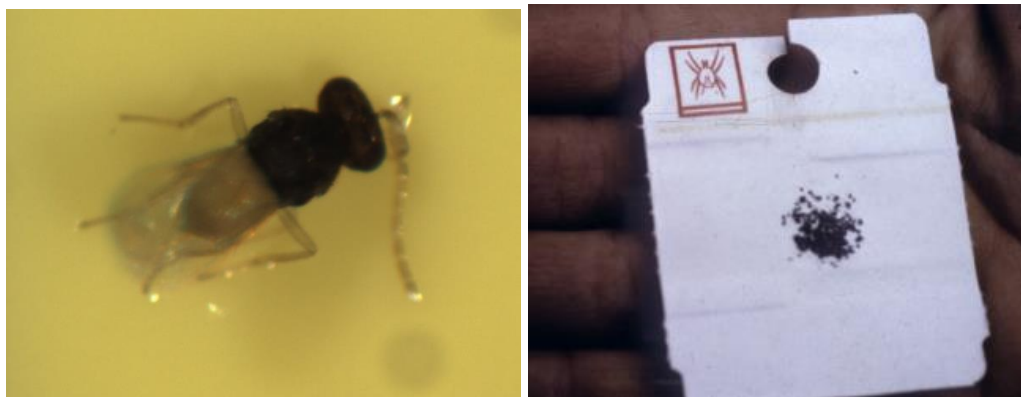
Host specific parasitic wasps, predatory mites, predatory beetles and entomopathogenic fungi can all be used in your biological control program.

### Types of Host Specific Parasitic Wasps

#### *Encarsia formosa*

*Encarsia* is especially effective against the greenhouse whitefly on long-term crops. *Encarsia* adults are very small wasps with a black head and thorax and a yellow abdomen. Females prefer to lay their eggs in the 3<sup>rd</sup> and 4<sup>th</sup> instar whitefly larvae. They also host feed on smaller whitefly larvae. Parasitized whiteflies turn black with a small, round hole as the adults emerge. *Encarsia formosa* is most effective at 70 to 80°F and 50 to 80% relative humidity. Adults do not fly when ambient air temperatures are below 65°F and survival is reduced at temperatures >86°F.

*Encarsia* are primarily shipped inside black parasitized whitefly pupae which are glued to small cards. They are also available as loose pupae in bottles or sold in combination with *Eretmocerus*.



Figures 1 & 2: Close-up of adult *Encarsia* (left) and *Encarsia formosa* pupae glued to a piece of cardboard that is attached to the plant. (right). Photos by L. Pundt

### Tips for Using *Encarsia formosa*

- Remove yellow sticky cards before and after releasing *E. formosa* to avoid capturing adults on the cards. Replace sticky cards 3 to 4 days following

release.

- Hang the cards in shaded areas in the lower canopy of plants to avoid desiccation from direct sunlight.
- Adults emerge from the pupae and fly upward. Introduce cards weekly starting when whiteflies are first detected.
- In general, for most crops, continue making releases until 80% to 90% of the whitefly population has been parasitized.
- When scouting, look for the distinct, black greenhouse whitefly pupae that are parasitized.

*Encarsia* is very sensitive to pesticide residues on plants or dried pesticide residues on greenhouse plastic. Avoid use of insecticides with long residual effects before the wasps are released. Consult online side effects databases maintained by biological control suppliers such as [Koppert](#), [Biobest](#), or [Bioline AgriSciences](#), for more information.

### ***Eretmocerus eremicus***

This parasitoid has been commercially available since the 1990s for control of *Bemisia tabaci*. *Eretmocerus* are very small parasitic wasps that are pale yellow with clubbed antennae. Besides directly parasitizing whitefly nymphs, *E. eremicus* adult females kill nymphs by host feeding. *Eretmocerus eremicus* attacks both sweetpotato whitefly and greenhouse whitefly. It tolerates warmer temperatures (77 to 84° F) as it is native to southern desert areas of California and Arizona

*Eretmocerus eremicus* is shipped as pupae that are either glued to paper cards or in blister packs or in bottles. When using blister packs, remember to open the flaps and do not place the blister pack so they would be facing the sun. *Eretmocerus* is also available in a mix with *Encarsia*. Contact biological control suppliers for information on release rates.

### ***Tips for using Eretmocerus eremicus***

- Do not release in direct sunlight.
- Prior to release, remove yellow sticky cards, which attract and capture the emerging parasitoids.
- Replace yellow sticky cards four days after releases have been made.
- When scouting, look for parasitized whiteflies. Greenhouse whitefly pupae are black. Sweetpotato whitefly pupae turn light brown.
- To assess quality of the whitefly parasitic wasps, place cards or blister packs in a small, screened container placed in a shaded location at room temperature for two weeks. Place a small piece of yellow study card on the inside of the container lid to make it easier to count. Count the number of emerged adults. About 95% of the adults should have emerged.



Figures 3 & 4 *Eretmocerus* is available in a blister pack (left) and as pupae that are glued to paper cards (right). Photos by L. Pundt



Figures 5 & 6: Brown parasitized sweet potato whitefly (left) and black parasitized pupae of greenhouse whitefly. Photos by L. Pundt

### **Predatory Mites**

*Amblyseius swirskii*, feeds on whitefly eggs and nymphs. This generalist predatory mite also feeds upon thrips, broad mites, spider mites and pollen. It is most effective at warmer temperatures (70°F) and a relative humidity of 70%. *A. swirskii* is available in breeding sachets, or in bulk that is released unto plant leaves. Growers often modify leaf blowers to broadcast these predatory mites when poinsettias are spaced pot to pot. In poinsettias, Dr. Vafaie found that combining *A. swirskii* with *Eretmocerus* was better at suppressing whiteflies compared to when either species was released alone.

*Eretmocerus* prefers 2<sup>nd</sup> instar whitefly nymphs and *A. swirskii* prefers whitefly eggs and 1<sup>st</sup> instar nymphs.

### **Predatory Beetles**

*Delphastus pusillus* is a small (1.3- 1.4 mm) long, dark brown to black predatory beetle that attacks all stages of whiteflies but prefers eggs and nymphs. *Delphastus* adults and larvae are predacious. Optimum temperatures are between 75 and 80° F. Adults

will not fly at temperatures below 55° F. *Delphastus* avoids feeding on parasitized whiteflies so is compatible with whitefly parasitic wasps. However, it does not perform well on greenhouse tomatoes.

## **Entomopathogenic (insect- killing) fungi**

### ***Beauveria bassiana***

When *Beauveria* fungal spores encounter and attach to the cuticle of susceptible insects, the fungal spores germinate and penetrate their body wall by force, producing enzymes that digest the cuticle.

Once the host insect is infected, the fungus rapidly grows inside of the insect, feeding on the nutrients present in the host's body and producing toxins. The infected whitefly larvae or pupa turn brown or pink as the insect's body is filled with the insect-killing fungus. White growth of the fungus from the insect's body is not necessarily seen under greenhouse conditions. Begin applications when whitefly populations are low.

*Beauveria* is compatible with many, but not all beneficials.

### ***Isaria fumosoroseus***

This insect killing fungus attaches to whitefly eggs, nymphs, pupae, and adults. Foliar applications of *Isaria* have been successfully combined with releases of *Encarsia formosa* in commercial greenhouse tomato production.

In summary, host specific parasitic wasps, predatory mites, and entomopathogenic fungi can all be used in your biological control program.

**By** Leanne Pundt, Extension Educator, UConn Extension, 2021, latest revision 2024

## **References**

Buitenhuis, R. 2017. Grower Guide: Quality Assurance of Biocontrol Products: Vineland Research and Innovation Centre. <https://www.vinelandresearch.com/wp-content/uploads/2020/02/Grower-Guide.pdf>

Hoddle, M.S., R.G, Van Driesche and J. P. Sanderson. 1996. Biological Control: A Grower's Guide to Using Biological Control for Silverleaf Whitefly on Poinsettias in the Northeast United States. UMass Extension Greenhouse Crops and Floriculture Program Fact sheet. <https://ag.umass.edu/greenhouse-floriculture/fact-sheets/biological-control-growers-guide-to-using-biological-control-for>

Sanderson, J.P., S. Wainwright-Evans, and R. Valentin. 2021. Best Practices for Biocontrols. Part 3. GrowerTalks. April 2021. <https://www.growertalks.com/Article/?srch=1&articleID=25175&highlight=sanderson>

Vafaie, E. 2021. Managing Whiteflies in Poinsettias Using Biological Control Agents. Greenhouse Grower. May 2021.

<https://www.greenhousegrower.com/production/managing-whiteflies-in-poinsettias-using-biological-control-agents/>

Van der Ent, S., M. Knapp, J. Kkapwijk, E. Moerman, J. van Schelt, and S. deWeert. 2017. *Knowing and recognizing the biology of glasshouse pests and their natural enemies*. K. Girard and K. Strooback (Eds). Koppert Biological Systems, The Netherlands. 443 pp.

Disclaimer for Fact Sheets: The information in this document is for educational purposes only. The recommendations contained are based on the best available knowledge at the time of publication. Any reference to commercial products, trade or brand names is for information only, and no endorsement or approval is intended. UConn Extension does not guarantee or warrant the standard of any product referenced or imply approval of the product to the exclusion of others which also may be available. The University of Connecticut, UConn Extension, College of Agriculture, Health and Natural Resources is an equal opportunity program provider and employer.