



Biological Control of Two-Spotted Spider Mites

The two-spotted spider mite (TSSM), *Tetranychus urticae*, is a common pest in greenhouses with a wide host range including specialty annuals and bedding plants, herbaceous perennials, vegetables, and herbs. The target audience of this fact sheet is commercial greenhouse growers.

Introduction

Predatory mites, predatory midges and predatory beetles can all be used in a biological control program. Different species of predatory mites (*Phytoseiulus persimilis*), *Neoseiulus (Amblyseius) californicus*, *Amblyseius andersoni*, *Galendromus occidentalis*, *Mesoseiulus longipes*, and *Neoseiulus (Amblyseius) fallacis* are each adapted to different environmental conditions (temperature and relative humidity levels). A predatory midge (*Feltiella acarisuga*) and a predatory ladybeetle (*Stethorus punctillum*) are also commercially available.

Some of the biological control agents used against thrips (*Neoseiulus (Amblyseius) cucumeris*, *Orius* sp. and *Amblyseius swirskii*) may also feed on spider mites but cannot be relied upon for control. Lacewings more commonly known for feeding upon aphids, may also feed upon spider mites. Some growers may also release the generalist predatory soil dwelling mite, *Stratiolaelaps scimitus* near perimeter walls, for use against the diapausing spider mites that are hiding in cracks and crevices.

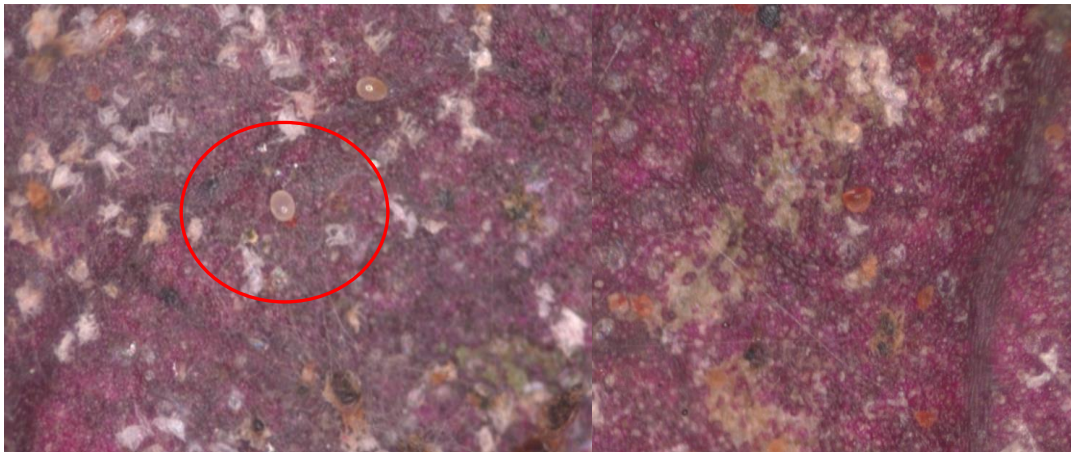
***Phytoseiulus persimilis*, a predatory mite**

Adult *Phytoseiulus persimilis* feeds on all stages of two-spotted spider mites. This specialist predator can only survive by feeding upon two-spotted spider mites. The adult *P. persimilis* is bright red in color, pear-shaped, long-legged, slightly larger, and more active than spider mites. Adult females lay eggs that are about 3x the size of two-spotted spider mite eggs and are more football shaped than the round two spotted spider mite eggs.

The development time for *P. persimilis* is shorter than for spider mites; about 5 days at 86°F, 9 days at 68°F, and 25 days at 59°F. At temperatures above 86°F, *P. persimilis* cannot keep up with the reproduction of two spotted spider mites. At low relative humidity (less than 60%), eggs shrivel and do not hatch. Optimum conditions are relative humidity above 75% and temperatures over 68° F. It does not go into a diapause stage. *P. persimilis* is attracted to the chemical odors produced by plants infected with spider mites as it searches for its prey by touch and scent. Both adults and nymphs actively search plants for two spotted spider mites. *P. persimilis* can spread through a greenhouse as long as plant leaves are in contact with each other. Since the 1960's, *P. persimilis* has been used in greenhouse vegetables but the glandular hairs on greenhouse tomato leaves reduce its dispersal.

Tips for *P. persimilis* use

- Release early when mite populations are low and two spotted spider mites are first noticed.
- This voracious, specialist predatory mite needs to have spider mite prey, or it will disperse or starve.
- *P. persimilis* is available either in a granular carrier or on bean leaves with all life stages and a food source.
- When using carrier product, check first by sprinkling some of the product unto a white sheet of paper and look for the active predatory mites.
- Gently roll the tube to mix the predatory mites in the carrier before application.
- Sprinkle material on leaves.
- Concentrate releases near hot spots of mite activity.
- Relative humidity should be greater than 75% and temperature above 68°F for some hours of the day. Lightly misting plants or walkways may increase humidity levels.
- Spider mite colonies should be reduced in 2 to 3 weeks.
- Contact your supplier for information on release rates. Supplier recommended release rates vary depending upon susceptibility of crops or cultivars to spider mites, length of crop time and infestation levels.
- To evaluate effectiveness, look for dead, shriveled spider mites that have been fed upon by *P. persimilis*. Adults and nymphs actively search for prey and suck them dry.



Figures 1 & 2: Predatory mite eggs (within circle) are larger and football shaped compared to round, oval spider mite eggs (Photo on left). Dead, shriveled spider mites that have been fed upon by predatory mites look deflated (on right). Photos by D. Ellis

***Neoseiulus (Amblyseius) californicus*, a predatory mite**

Neoseiulus (Amblyseius) californicus is slower acting than *P. persimilis* but has a broader host range than *P. persimilis* and survives longer in the absence of prey by feeding upon other plant feeding mites (such as broad and cyclamen mites) and thrips. *N. californicus* may also feed upon mold, nectar and pollen. This slow acting predatory mite is useful for keeping low spider mite populations under control and can be released

preventively. In situations where high temperature or relative humidity variations can occur, *N. californicus* may be a better choice than *P. persimilis*. You can also release *N. californicus* in combination with *P. persimilis*.

Tips for *N. californicus* use

- Release as soon as possible after receiving.
- It is available in a granular carrier or in breeding sachets.
- Gently roll the tub to mix the predatory mites in the carrier before application.
- *N. californicus* is active at temperatures between 46°F to 95°F, 40-80% RH.
- Consult with your supplier for information on release rates.

***Amblyseius andersonii*, a predatory mite**

This predatory mite feeds upon spider mites, broad mites, and cyclamen mites. It may also survive on thrips and fungal spores in the absence of mites. *A. andersonii* can be released when there are low numbers of spider mites. If hot spots develop, *P. persimilis* can be used with *A. andersonii*. *A. andersonii* is active at a wide range of temperatures (42 - 104 °F) and can tolerate cooler temperatures than other mites can. It can be applied to both greenhouse and outdoor crops and is available in a granular carrier or in breeding sachets or strips of sachets.

***Neoseiulus (Amblyseius) fallacis*, a predatory mite**

This predatory mite feeds upon spider mites and cyclamen mites. The shiny pear shaped adults (1/50 inch long) are tan to light orange in color with long legs. *N. fallacis* can survive in the absence of prey on other small arthropods and pollen. *N. fallacis* tolerates a wide range of temperatures (48-85°F) but does best where there is a dense plant canopy and relative humidity over 50%. *N. fallacis* is available on bean leaves or in a granular carrier. You can also release *N. fallacis* in combination with *P. persimilis*.

***Galendromus occidentalis*, a predatory mite**

This predatory mite feeds upon two spotted spider mites. *G. occidentalis* does best at temperatures between 50° F to 115° F and 30 to 60% RH. If mite populations are low, *G. occidentalis* can feed upon pollen. *G. occidentalis* is available in a granular carrier.

***Mesoseiulus longipes*, a predatory mite**

This predatory mite feeds upon spider mites and does best at temperatures between 80-90 °F but can tolerate lower humidity levels (40% RH at 70° F).

***Feltiella acarisuga*, a predatory midge**

A small (1/16 of an inch long) predatory gall midge (*Feltiella acarisuga*) feeds on two spotted spider mites. (Another species of gall midge is commercially available for use against aphids.) Adults live for 2 or 3 days, are more active at night and rest during the day on the underside of leaves. Females lay orange to red eggs among the spider mite colonies with eggs hatching in 3 to 5 days. The larvae stage is the only predacious stage.

Adults emerge from the pupae. This predatory midge develops from egg to adult in 10 days at 80° F and 34 days at 59°F with relative humidity between 60 to 95%. Extended periods of relative humidity below 60% may reduce their survival and reproduction, optimum relative humidity is 80%.

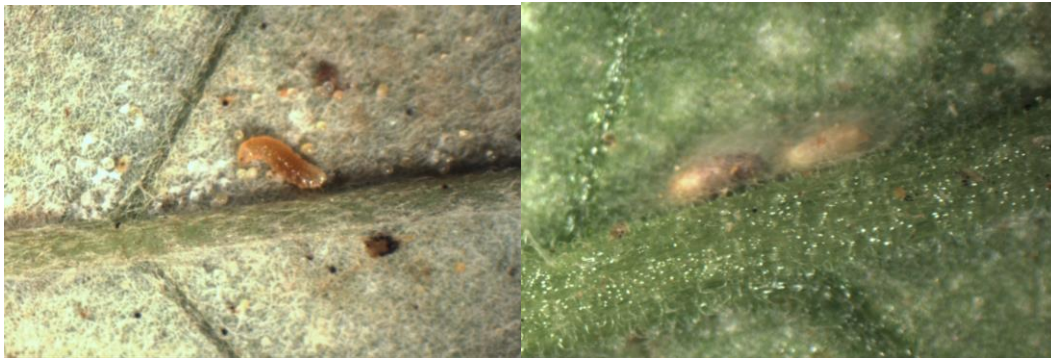
Feltiella is shipped in the pupal stage and adults emerge soon after arrival. They are best released late at night or early in the morning. *Feltiella* can be used with *P. persimilis* (depending upon the crop and pest levels). Adults are excellent flyers so they may be able to reach hanging baskets and other hard to reach ornamental crops. *Feltiella* is also able to forage on the hairy leaves of greenhouse tomatoes whereas the tomato's glandular hairs reduce the survival and reproduction of *P. persimilis*.

After about a week of feeding, larvae pupate on the underside of leaves forming tiny, white velutinous pupal cocoons.

Tips for *Feltiella acarisuga* use

- Commercially available as pupae on paper pieces in pots or boxes. Pierce paper disc on the cover, so the adult midges can emerge.
- Open the box containing the predatory midges, place close to spider mite infestations. Let box stand for one week until adults have emerged.

When scouting, look for the nearly white pupal cases near the midrib on the leaf undersides and for the bright orange larvae.



Figures 3 & 4: Predatory midge larvae on left and pupae on right. Photos by L. Pundt

Regular monitoring, in conjunction with cultural controls help insure the successful use of predatory mites, and midges against spider mites.

By Leanne Pundt, UConn Extension, 2007, latest revision August 2024

References

Buitenhuis, R. 2017. Grower Guide: Quality Assurance of Biocontrol Products: Vineland Research and Innovation Centre. <https://www.vinelandresearch.com/wp-content/uploads/2020/02/Grower-Guide.pdf>

Cloyd, R. 2008. All predatory mites are not created equal. Greenhouse Grower. June 2008. <https://www.greenhousegrower.com/production/insect-control/all-predatory-mites-are-not-created-equal/>

Gillespie, D. R., G. Opat and B. Roitberg. 2000. Effects of Temperature and Relative humidity on Development, Reproduction, and Predation in *Feltiella acarisuga* (Vallot) (*Diptera: Cecidomyiidae*). Biological Control. 17. 132-138.

Van der Ent, S., M. Knapp, J. Kkapwijk, E. Moerman, J. van Schelt, and S. deWeert. 2017. *Knowing and recognizing the biology of glasshouse pests and their natural enemies*. K. Girard and K. Strooback (Eds). Koppert Biological Systems, The Netherlands. 443 pp.

Osborne, L. S., L. E. Ehler, and J. R. Nechols. 1999. Biological Control of the Twospotted Spider Mite in Greenhouses. University of Florida. Bulletin 853. <https://mrec.ifas.ufl.edu/iso/spmite/b853a1.htm>

Disclaimer for Fact Sheets: The information in this document is for educational purposes only. The recommendations contained are based on the best available knowledge at the time of publication. Any reference to commercial products, trade or brand names is for information only, and no endorsement or approval is intended. UConn Extension does not guarantee or warrant the standard of any product referenced or imply approval of the product to the exclusion of others which also may be available. The University of Connecticut, UConn Extension, College of Agriculture, Health and Natural Resources is an equal opportunity program provider and employer.