



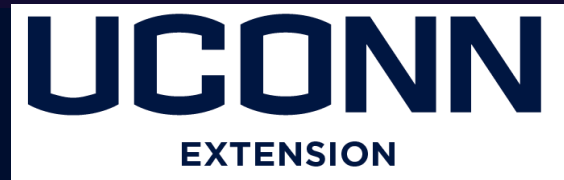
# Growing in a Freight

Jeremy Whipple  
Mashantucket Pequot Tribal Nation



United States  
Department of  
Agriculture

National Institute  
of Food and  
Agriculture





# Land Acknowledgment

We would like to begin by acknowledging that the land on which we gather is the territory of the Mashantucket Pequot, Mohegan, Eastern Pequot, Schaghticoke, Golden Hill Paugussett, Nipmuc, and Lenape Peoples, who have stewarded this land throughout the generations. We thank them for their strength and resilience in protecting this land, and aspire to uphold our responsibilities according to their example.



United States  
Department of  
Agriculture

National Institute  
of Food and  
Agriculture



Mashantucket Pequot  
Tribal Nation



# Why we chose Freight Farm

- Land access
- Poor soil: Rocky, woody, slopy land
- Water conservation: 3-4 gallons/day
- Productivity (# of produce/unit area): 1 freight farm ~ 4 acres of land
- Limited access to healthy, locally grown food
- Food sovereignty
- Opportunity to share healthy food to the community and beyond (Farm to School, local restaurants, farmers market)



United States  
Department of  
Agriculture

National Institute  
of Food and  
Agriculture



Mashantucket Pequot  
Tribal Nation

# Cost of Freight Farm (year 1)

Items	Costs
Salary (40 hours/week @19)	\$39,520
Fringe (15%)	\$5,928
Shipping Container (aka Freight Farm)	\$165,000
Software subscription for Farmhand App (\$1,200 annually x 2 years)	\$2,400
Concrete Slab Pour (OPTIONAL)	\$14,245
Electrical Rough-In for Shipping Container	\$20,000
Water connection to Shipping Container	\$2,500
Substrate and fertilizer	\$6,797
Product packaging, reusable transport bins, plastic liners	\$20,000
Electrical operating costs	\$5,000
<b>PROJECT TOTALS</b>	<b>\$281,390</b>

# Operational cost

Items	Costs
Salary (40 hours/week @19)	\$39,520
Fringe (15%)	\$5,928
Shipping Container (aka Freight Farm)	\$0
Software subscription for Farmhand App (\$1,200 annually x 2 years)	\$2,400
Concrete Slab Pour (OPTIONAL)	\$0
Electrical Rough-In for Shipping Container	\$0
Water connection to Shipping Container	\$0
Product packaging, reusable transport bins, plastic liners	\$20,000
Substrate and fertilizer	\$6,797
Electrical operating costs + water	\$5,000
<b>PROJECT TOTALS</b>	<b>\$79,645</b>



# Process of acquiring and installing

- 3 months to construct after payment
- Training in Boston at Headquarter of Freight Farm (2-days \$1500)
- Comes pre-assembled- 2 days to assemble
- On-boarding support from Freight Farms
- Leveled ground or concrete slab to put the Freight
- Power and water hook ups



United States  
Department of  
Agriculture

National Institute  
of Food and  
Agriculture



Mashantucket Pequot  
Tribal Nation

## Seed to harvest

- Fusion Romaine variety
- Seed to transplanting – 3 weeks
- Planting to harvest – 3 weeks
- 45 heads of lettuce per panel x 22 panels = 990 heads of lettuce per week
- $990 \times 52 = 51,480$  heads per year
- Waste ~2%
- Net production = 50,450 per year



United States  
Department of  
Agriculture

National Institute  
of Food and  
Agriculture



Mashantucket Pequot  
Tribal Nation



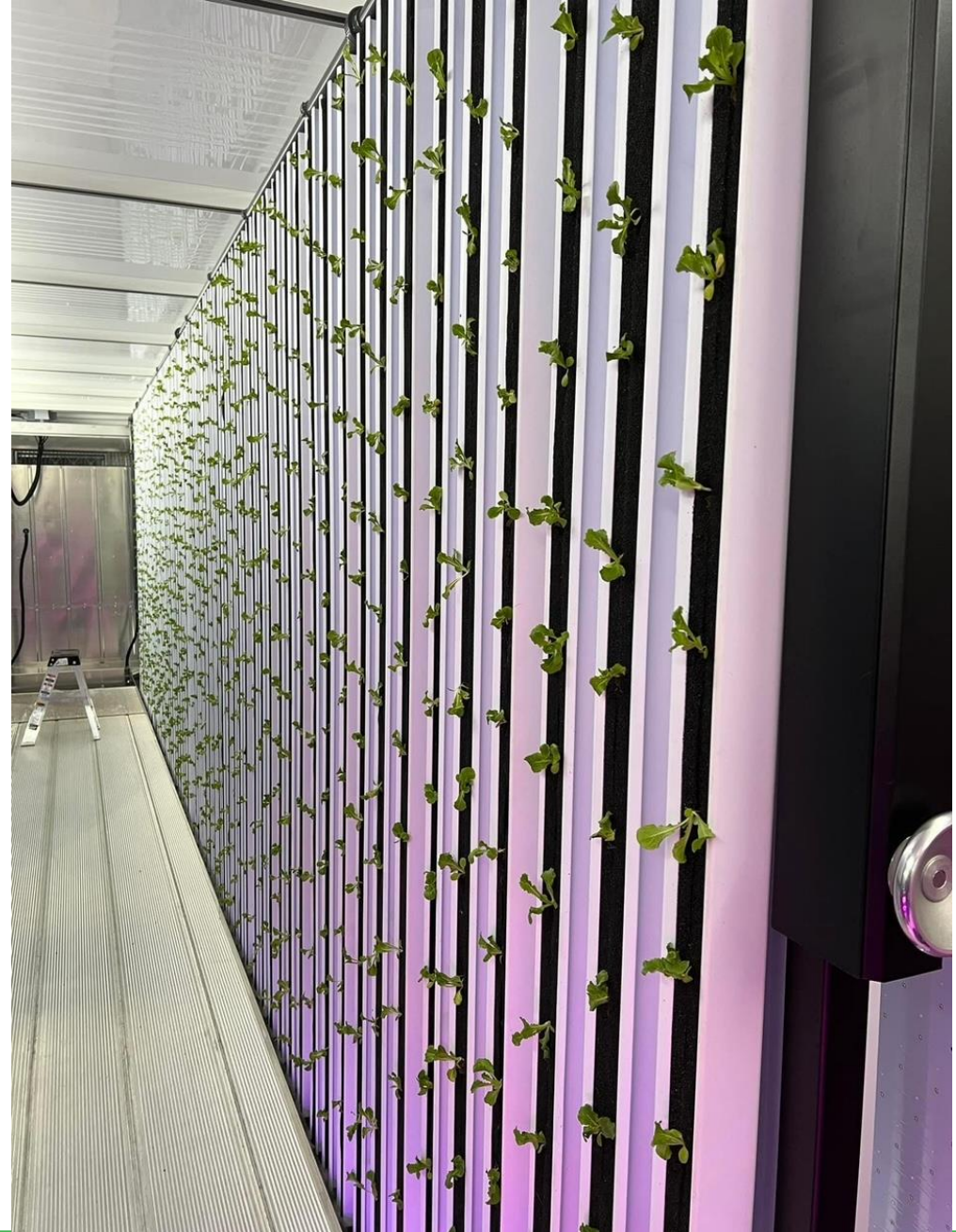
# **Production and revenue**

Current pricing:

\$2.60- \$3.45 /head = on average \$3.025/head

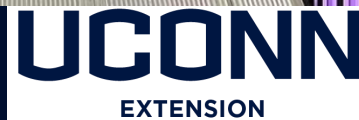
## **ANNUAL REVENUE**

50,450 per year x \$3 = \$152,612



United States  
Department of  
Agriculture

National Institute  
of Food and  
Agriculture



Mashantucket Pequot  
Tribal Nation















# Social Media

---

Follow the [Mashantucket Pequot Department Of Agriculture](#) on Facebook!





# Thank you!



United States  
Department of  
Agriculture

National Institute  
of Food and  
Agriculture



Mashantucket Pequot  
Tribal Nation